



Get the most of wind energy indexes

WINDEX Course

A one-day professional training on mastering wind energy indexes, specially designed for Asset Managers and open to wind farms operators.

MORE THAN
100 PROFESSIONALS
TRAINED IN
5 YEARS

Organised and animated by:



Sessions 2021 in Paris:

Tuesday June 1st (in English)

Monday June 28th (in French)

Monday October 25th (in French)

**Understand and master the use
of wind energy indexes**

- How to explain production variations of a wind farm?
- What is the purpose of energy indexes?
- How to use a monthly index?
(Best practices)
- How to check the stability of my production capacity?

Learning objectives

Beyond theoretical elements required to understand energy indexes, the emphasis will be put on concrete case studies to ensure good practice of this tool. They will allow the illustration of applications and the enhancement of best practices for the use of wind energy indexes. By the end of the training session, attendees should be able to:

- Master the use of indexes to explain production variations over time,
- Use indexes to get a first estimate of the actual production capacity of my wind farm,
- Identify the level of uncertainty related to energy indexes,
- Use indexes to control the stability of the performance over time et to get a global overview of your portfolio.

Targeted audience

Set up by EOLTECH and METROL since 2016, this one-day training course is intended for individuals wishing to benefit from a first tool for monitoring and analysing the evolution of the production capacities of their operating wind farms.

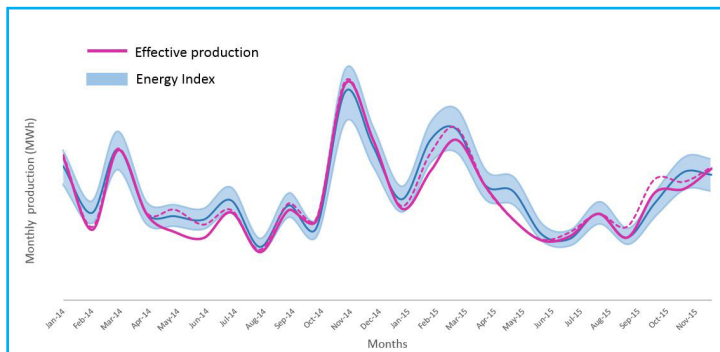
Asset managers, project developers, operators, financiers and wind farm owners are particularly concerned.

Headcount

In order to guarantee an optimum quality of exchanges, especially during the case studies, the headcount is **limited to maximum 12 attendees per session**.

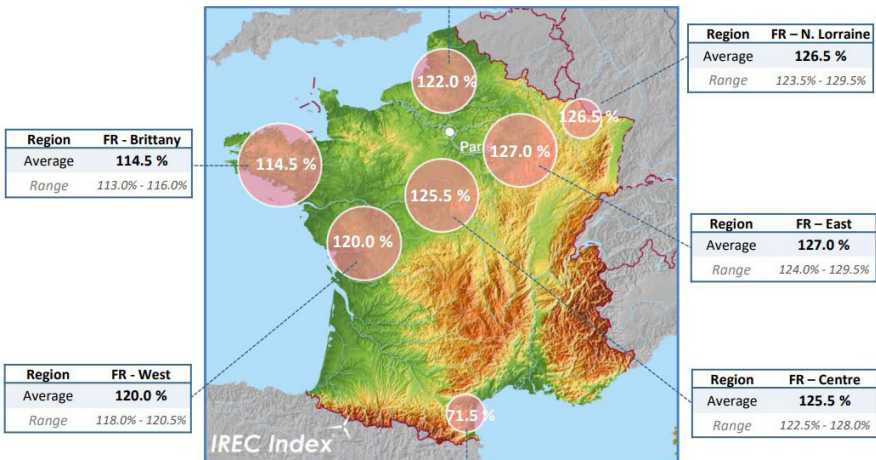
In order to adapt the training to all scenarios, the sessions are planned in a hybrid format (face-to-face or remote, according to government guidelines).

Monitoring of the production capacity of an operating wind farm



Schedule

9:00	Reception of the participants	14:30	Part 2.1: Best practices for careful use of indexes (production targets and amplitude of variation) Production capacity follow-up and uncertainty
9:15	Objectives of the training course Introduction and context		
10:00	Part 1: Production variability, Theoretical P50 vs operational P50 Definition and purposes of wind energy indexes Examples and first steps	16:00	Part 2.2: Practical case studies on laptops and exchanges on the results.
		17:30	Conclusions & recommendations
13:00	Lunch & discussions on the context and development factors of wind energy	17:45	End of the session

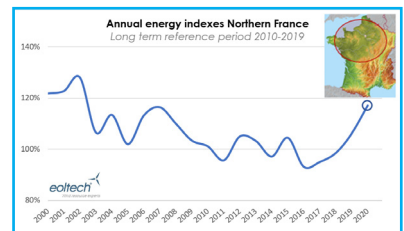


Methods and means

The training session lasts a day, corresponding to 7h00 of training. Lunch is an uneven part of the program. It is used to continue the exchanges, and to discuss the news and perspectives of wind power.

The document used for the presentation will be provided as paper support only. For the practical case studies, it is recommended to bring your own laptop computer.

A training certificate and a copy of the attendance sheet are delivered by METROL at the end of this training session.



Registration and general conditions

Download on our website www.metrol.fr a registration form, or contact us by email; Once completed, return the registration form to **METROL** : info@metrol.fr or by post. The registration fees are fixed at **480 euros excl. taxes** (VAT at 20 %), corresponding to 576 euros including taxes per attendee. Your registration will be validated upon receipt of the registration form and full payment. A convocation will be addressed to the participants approximately 15 days before the session.

Any cancellation must be formulated in **writing** to METROL. If it should happen **less than 15 days** before the session, a lump-sum payment of **30 %** of the total amount will be retained (i.e. 144 euros excl. taxes). The owed amount would be of **100 %** in case the cancellation occurs **less than 5 working days** before the session. The replacement of the participants must be formulated in writing less than 3 days before the session, together with a new registration form.

Should any circumstances beyond their control lead the organisers to change the date and/or place of the session, or switch it to remote format, participants would be informed as soon as possible.

Practical information

The WINDEX training session will take place in Paris at the METROL premises located at:

44, rue de la Quintinie - 75015 Paris
Tél.: 01 40 45 33 40 - www.metrol.fr

- Métro: Station Vaugirard - Ligne 12 (Mairie d'Issy, Porte de la Chapelle)
- Bus: n° 39 / 49 / 70 / 80 / 88 / 89
- Vélib Stations au 18 place Chérioux / 3 rue Paul Barruel / 133 rue de l'Abbé Grout

An access plan will be sent with the convocation.



EOLTECH and METROL

Founded in 2002, **EOLTECH** is an independent consultancy whose core business is focused on the analysis of the wind resource. With close to 20 years of experience in this field, our company has expanded its range of services and is now the leading French player in this market. Totally independent from any project development, EOLTECH is a trusted third party and thus meets the requirement of independence which is necessary in the financing phase of wind projects. Since 2011, EOLTECH has released **regional energy indexes** in France.

Founded in 1984, **METROL** works primarily on behalf of institutional partners within the field of Renewable Energies and Energy Management. As a professional training establishment, METROL is specialised in « turnkey » organisation and animation of training sessions, seminars, conferences, round tables and expert missions. It also conceives and organises actions of project guidance and promotion programmes of the Energy Transition.



Contacts

For any questions concerning **this training course**, please contact **METROL**:

- Philippe ROCHER
Tél.: + 33(0)1 40 45 33 40
philippe.rocher@metrol.fr

For any questions concerning the **energy indexes**, please contact **EOLTECH**:

- Marion JUDE
Tél.: + 33(0)5 61 15 44 13
marion.jude@eoltech.fr
- Hélène WILLIS
Tél.: + 33(0)5 61 15 44 13
helene.willis@eoltech.fr