



Get the most of wind energy indexes

WINDEX Course

This one-day professional training course will teach you how to master wind energy indexes. Specially developed for Asset Managers, it is open to wind farm operators.

OVER 120
PROFESSIONALS
TRAINED IN
7 YEARS

Organized and coordinated by:



2023 sessions in Paris:

Tuesday March 21st (in French)

Tuesday May 31st (in English)

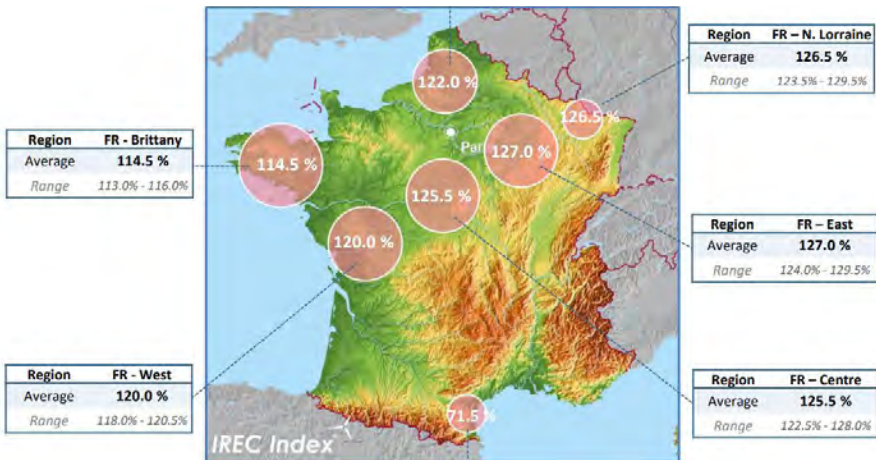
Tuesday November 14th (in French)

**Understand and master the use
of wind energy indexes**

- How to explain production variations of a wind farm?
- What is the purpose of energy indexes?
- How to use a monthly index?
(Best practices)
- How do I check the stability of my production capacity?

Schedule

9:00	Reception of the participants	14:30	Part 2.1: Proper use of indexes and best practices (production targets and amplitude of variation) Production capacity follow-up and estimation of the uncertainty
9:15	Training course objectives Introduction and context		
10:00	Part 1: Wind energy indexes definition and objectives Production variability, Theoretical P50 vs effective P50, First step illustrations	16:00	Part 2.2: Practical case studies on laptops and discussing on the results.
		17:30	Conclusions & recommendations
13:00	Lunch & discussions on the context and development factors of wind energy	17:45	End of session

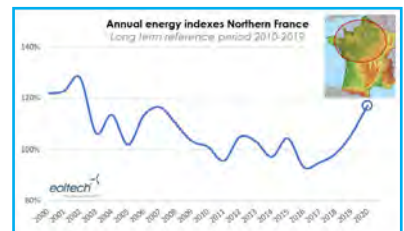


Methodology & tools

The training session lasts 7 hours of effective learning over one day. The lunch break is used to continue exchanges and discuss current news and wind power perspectives.

The training support is provided in paper only. Participants are strongly encouraged to bring their own laptop to follow the case studies.

METROL delivers a training certificate and a copy of the attendance sheet at the end of the session.



Learning objectives

Beyond the theoretical framework, our case studies focus on the proper use of energy indexes. They illustrate wind energy index applications and highlight best practices. At the end of this training session, attendees shall be able to:

- Put their wind farm production into perspective with the corresponding energy indexes,
- Carry out a **preliminary assessment of their operating wind farm effective production capacities** with an energy index,
- Handle energy index uncertainty levels,
- Monitor and master the production capacities of different wind farms in operation.

Target audience

Created by EOLTECH and METROL in 2016, this one-day professional training course is open to all individuals who wish to benefit from a starter tool to monitor and analyze their wind farm production capacities over time.

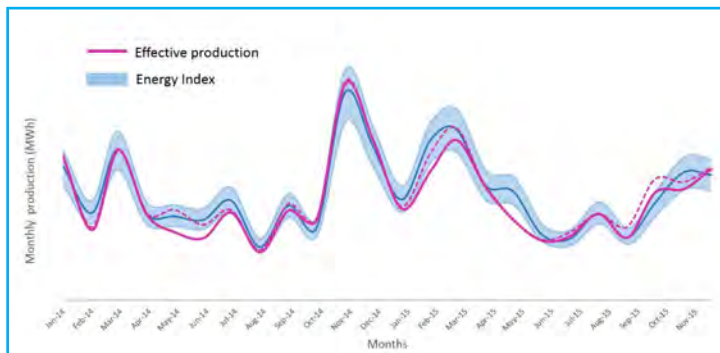
In particular, this course is recommended for assets managers, project developers, operators, financiers and wind farm owners.

Participant Limit

To create the best context for group discussions, especially during case studies, the number of participants is limited to 12.

In order to prepare for any scenario (in accordance with government guidelines), all sessions are organized in hybrid format (either remotely or on site).

Monitoring of the production capacity of an operating wind farm



Registration rules and general conditions

Please fill out our registration form which you can download from www.metrol.fr, and return it to METROL by email at info@metrol.fr, or by post. You may also contact us by email for further information. The registration fee is EUR. 575 (i.e. EUR. 480 + 20% VAT). We shall confirm your enrolment upon receipt of the registration form and full payment of the registration fee. Participants will receive a notification 15 days before the day of the session.

All cancellations must be made in writing to METROL. If a cancellation occurs less than 15 days before the session date, METROL will retain 30% (i.e. EUR 144 excl. VAT). If it occurs **less than 5 working days** before the session date, METROL will retain 100% of the fee. Any change of participant must be notified in writing **at least 3 days** before the session, along with a new registration form.

Should any unforeseen circumstances, beyond the organizers' control, lead to a change of training session date and/or location and/or format (either hybrid or on site), the participants will be informed as soon as possible.

Practical information

The WINDEX training session will take place in Paris, at METROL's premises located:

44, rue de la Quintinie - 75015 Paris
Tél.: 01 40 45 33 40 - www.metrol.fr

- Métro: Station Vaugirard - Ligne 12 (Mairie d'Issy, Porte de la Chapelle)
- Bus: n° 39 / 49 / 70 / 80 / 88 / 89
- Vélib Stations au 18 place Chérioux / 3 rue Paul Barruel / 133 rue de l'Abbé Groult

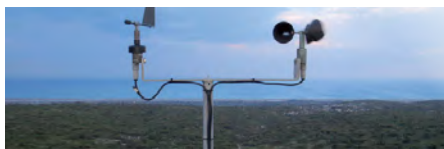
You will receive a map with directions with the notification.



EOLTECH and METROL

Founded in 2002, **EOLTECH** is an independent consultancy firm focused on wind resource assessment. Having over 15 years of experience in this field, it has expanded its range of services to become the leading player in this sector on the French market. EOLTECH is a trusted third party, fully independent from any wind project development, and therefore meets all the independence requirements for the wind project financing phase.

Founded in 1984, **METROL** works primarily on behalf of institutional partners in the Renewable Energies and Energy Management sector. METROL is a professional training services firm specialized in turnkey organization and moderation of training sessions, seminars, conferences, round tables and is regularly appointed to conduct various independent expert assessments. The company also designs and organizes Energy Transition project orientation and promotion programs.



Contacts

For any questions regarding **this training course**, please contact **METROL**:

- Philippe ROCHER
Tél.: + 33(0)1 40 45 33 40
philippe.rocher@metrol.fr

For any questions regarding the **energy indexes**, please contact **EOLTECH**:

- Marion JUDE
Tél.: + 33(0)5 61 15 44 13
marion.jude@eoltech.fr
- Hélène WILLIS
Tél.: + 33(0)5 61 15 44 13
helene.willis@eoltech.fr